



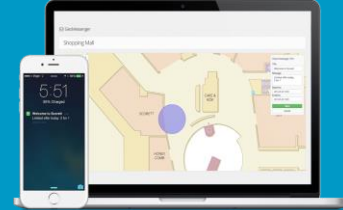
Linköping Center for Sensor Informatics and Control (LINK-SIC)

-

A VINNOVA Competence Center

Workshop Nov 7, 2017

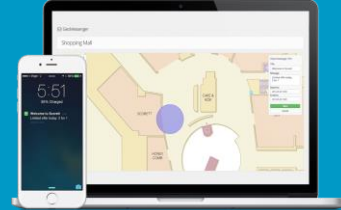
Svante Gunnarsson
Center Director
Linköping University





Center partners

Linköping University
ABB Corporate Research
ABB Cranes
ABB Robotics
SAAB Aeronautics
Scania
Actia Nordic
Alelion
Intuitive Aerial
Senion
UMS Skeldar



Vision and goals

Vision

The vision for LINK-SIC is to be an attractive and internationally competitive arena for industry-oriented research within Sensor Informatics and Control, contributing to growth and development of Swedish industry.

Long Term Goals

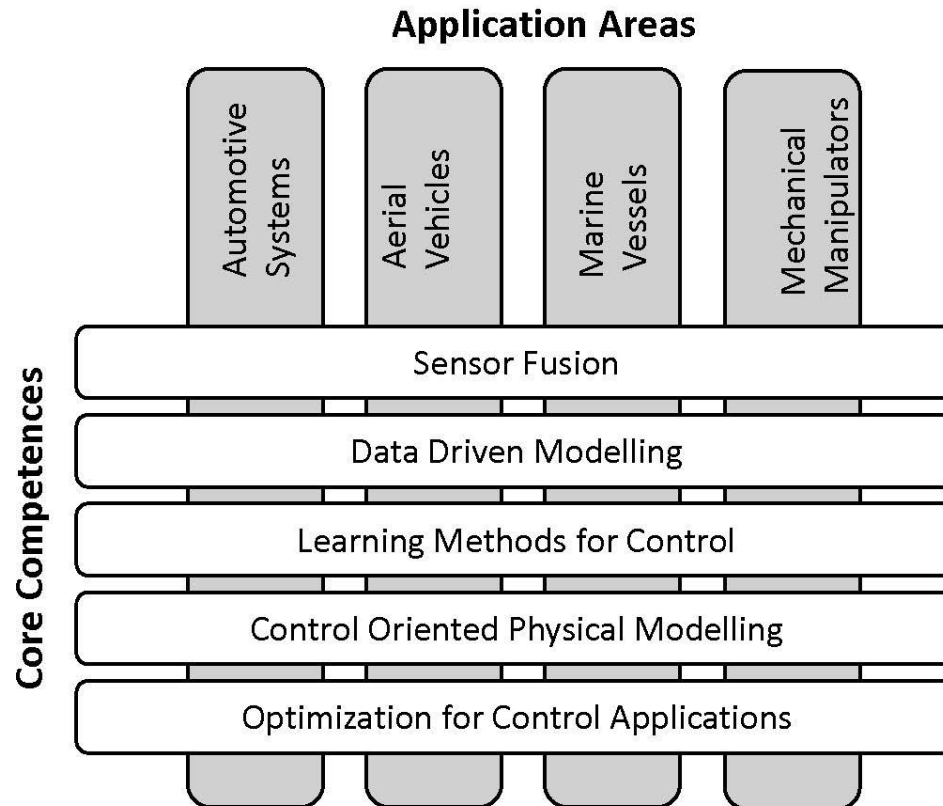
- The industrial partners are still world-leading in their fields and have a strong innovation capability.
- The industrial partners still have significant research and development activities in Sweden.
- The center constitutes a solid platform for industry-related research of high scientific quality.
- The center research continues to influence the engineering education at Linköping University.
- The gender balance within the education and research connected to the center has improved.
- The small and medium size enterprises have grown and benefited from participation in the center.
- There are active collaborations with a selected set of international partners within industry-oriented research.

Research program and research strategy

Research program

Strong research areas
Crucial in all
application areas

Related to the
industrial partners



And also

- Competence within innovation and entrepreneurship

Research Strategy

- **PhD students projects (including industrial PhD students)**
- **Post docs (including industrial Post docs), Adjunct positions**
- **And:**
 - Core competence workshops and yearly center workshop.
 - International exchange.
 - Connection to education, e.g. via CDIO projects.
 - Research visits at LiU for employees from the small and medium size companies.
 - Student summer projects.
 - Master's theses.
 - Researchers from the LINK-SIC teams meet **all** students studying within the five year Engineering education programs at LiU.