



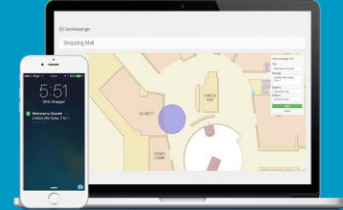
Linköping Center for Sensor Informatics and Control (LINK-SIC)

-

A VINNOVA Competence Center

Welcome!
and
Update

Svante Gunnarsson
Center Director
Linköping University



Program

9.00 Coffee

9.20 Welcome and LINK-SIC update, Svante Gunnarsson, LiU

9.40 New and upcoming PhD and Licentiate theses:

- Modeling and Optimal Control for Dynamic Driving of Hybridized Vehicles with Turbocharged Diesel Engines, Kristoffer Ekberg
- Modeling and Model Based Control of Automotive Air Paths, Robin Holmbom
- Time-Optimal Cooperative Path Tracking for Multi-Robot Systems, Hamed Haghshenas
- Closed-loop Estimation and Detection for Quadcopters, Du Ho Duc

11.00 Break

11.15 The TECoSA competence center, Martin Törngren, KTH

11.45 Poster teasers

12.00 Lunch at Universitetsklubben and Poster session

14.00 Presentation of UMS Skeldar, Ola Härkegård, UMS Skeldar

14.30 Presentation of Alelion, Peter Tammpere, Alelion

15.00 Closing of the workshop

Vision

The vision for LINK-SIC is to be an attractive and internationally competitive arena for industry-oriented research within Sensor Informatics and Control, contributing to growth and development of Swedish industry.

Since last year

- A very special year.
- PhD thesis by Kristoffer Ekberg, Robin Holmbom (early 2022), Du Ho Duc (early 2022), and Lic thesis by Hamed Haghshenas.
- One new PhD student: Max Johansson.
- Farnaz Adib Yaghmaie, position as Assistant Professor.
- Journal and conference papers.
- Three student projects in collaboration with the SMEs.
- Continued collaboration with organizations for female students. Inspiration seminar with female alumni from industry.

Since last year (cont.)

- Several Master's theses with center partners.
- Workshop about Reinforcement learning (two half-days in March and April).
- The YuMi-robot from ABB used in student projects (both 2021 and 2022).
- Svante G and Lars E represented LINK-SIC at the Scania Innovation Day,
- Enabling knowledge transfer via course material on-line. The sensor fusion course used as pilot case.
- Restarted the PhD student seminars.
- Initial contacts and discussions with the TECoSA competence center.
- Started preparations for the upcoming 5-year evaluation.
-

Upcoming events

In addition to everything else:

- 5-year evaluation

Components of the evaluation:

- Self-evaluation report
- The annual report for 2021
- The report from ISAB from 2021
- The report from the 2-year follow-up
- Indicators collected from the annual web survey
- Survey to the center partners
- Site visit

LINK-SIC BOARD



INTERNATIONAL SCIENTIFIC ADVISORY BOARD

MANAGEMENT TEAM

DIRECTOR



COORDINATOR

Research Leaders & Area Coordinators

PhD Students

Senior researchers

Industrial PhD Students/Postdocs

Industrial Researchers

More information can be found via ...

- <https://liu.se/en/research/link-sic>