

Centre for Medical Humanities and Bioethics

YEARBOOK 2022/2023

Table of Contents

4

From the Director

6

Who We Are

9

CMHB Research

10

Futures Ahead Conference

12

Medical Humanities and COVID/
Post-COVID Challenges Workshop

13

"After the Pandemic: Unexpected
Collaborations, Innovations and
Insights", Scientific Salon 2022

14

Strimman - Open Lectures in
Medical Humanities and Bioethics

16

Lennart Nordenfelt Appointed
Honorary Doctor

20

Project Descriptions 2022/2023

31

International Conversations,
Collaborations, and
Guest Researchers

32

Upcoming Events
during 2023/2024

33

Publications 2022/2023

Photo:

LIU: Charlotte Perhammar (p. 5), Magnus Johansson, Anna Nilsen (p. 11), Thor Balkhed (p. 13), Emma Busk Winquist (p. 17), LIU's image database (p. 6-8).
Pexels: Matthias Zomer (p.22), cottonbro studio (p. 25, 26), Alex Knight (p. 28, 29).
Pixabay: Pexels (contents), ambermb (p. 21).
Unsplash: Jong Marshes (cover), Kiwihug (p. 35).
Kristin Zeiler (p. 31), Vadstena kloster hotell (p. 32).

Graphic design: Tomas Hägg, LiU-Tryck. **Print:** LiU-Tryck, June 2023.



From the Director

The academic year 2022/2023 has been filled with exciting events. As usual, the yearbook offers glimpses into some of them. The international conference *Futures Ahead – Translations and collaborations between medicine, social science and the humanities* was one of the much-longed for events that were postponed during the pandemic. The joy of being able to meet in person was almost tangible when ca 80 scholars met for three days of intense research presentations and conversations in June 2022!

This year, CMHB has also organized an international workshop on *Medical Humanities and COVID/post-COVID challenges*. The workshop gathered researchers from various disciplinary and interdisciplinary strands of medical humanities, and presentations were given on topics such as shame and post-COVID, experiences of becoming anonymous as a COVID patient and temporality, suffering and uncertainty in narratives following COVID-19. Results from this workshop will soon be published in a special issue in the *Journal of Medical Humanities*, whom we thank for making this possible. Further, the theme of COVID and post-COVID lay at the heart

of this academic year's Scientific Salon, that focused on new collaborations and innovations called for and emerging as responses to the pandemic challenges. As is the format for the Scientific Salon, participants in a panel presented examples of such new collaborations and innovations and how they worked to enable these, and the panel was followed by discussions with the panel as well as round table conversations. In a time when quick fixes might be what is called for, the format of the scientific salon enables and cherishes in-depth conversation between guests at the salon from for example health care, academia, health care politics and health care authorities.

Further, during this academic year, CMHB has had the pleasure to host the Faculty of Arts and Sciences' *Strimma*, i.e., an evening lecture series where colleagues at the centre have presented and discussed new research on urgent health challenges, from various perspectives within medical humanities including the social sciences and bioethics. Did you miss any of these and would like to listen to them? Please see p.15 in this yearbook, for links to the lectures that are now available on YouTube.

Further, colleagues at CMHB have met at the monthly seminars – which represent the very heart of the activities at CMHB. At the seminars, we discuss and present ongoing research, and engage in critical and constructive conversations. A special thank you goes also to the guest researchers from the UK, Latvia, and Sweden who have joined CMHB this academic year, for short periods of time – it has been a pleasure to meet you all.

A major goal of the work at CMHB is to strengthen the area of medical humanities and bioethics locally at Linköping University (LiU), regionally, nationally and internationally. On a national level, CMHB is part of the *Swedish Network for Medical Humanities*, which this year met in Lund at a two-day event organised by our colleagues at the Birgit Rausing Centre for Medical Humanities, Lund University. On an international level, and apart from organizing and taking part in international conferences and workshops, we have continued to reach out to and meet with colleagues at medical humanities and/or bioethics centres and departments in other countries, with the aim of establishing and strengthening possibilities for collabora-

tion. In addition, continuing the collaboration between CMHB and the Institute for Medical Humanities (IMH) at Durham University formally established through a Memorandum of Understanding, CMHB is one of the international partners in the IMH's new *Discovery Research Platform for Medical Humanities*, funded by a £9m award from the Wellcome Trust. We very much look forward to engaging in joint work and conversations on how to tackle health challenges as well as challenges within medical humanities! These conversations – locally, nationally and internationally – are most valuable to us, as ways to strengthen our shared field of research and teaching. Finally, don't miss the glimpses into the near future: an international workshop on epistemology and interdisciplinarity in medical humanities and across the humanities, the social sciences, clinical practices and biomedicine is coming up in September 2023. In 2024, we're also planning our first Early Career Research School for PhD students and postdocs. More information about this will be made available on the CMHB homepage.

The joint work and individual contributions from all the excellent and generous colleagues at CMHB is what makes CMHB what it is. A heartfelt thank you, to all of you – colleagues and supporters of CMHB. Further, the international workshops in 2022 and in September 2023 were funded by *Riksbankens Jubileumsfond*, the international conference was funded by The Royal Swedish Academy of Letters, History and Antiquities and LiU, and the Early Career Research School is partly funded by the Swedish Research Council as part of the research environment grant to interdisciplinary research. At CMHB, we are most grateful for the financial support that has made these events possible. Special thanks to CMHB's coordinator Lisa Guntram and to Maria Arnelid, Sarah Bloem, Anna Bredström, Eleanor Byrne, Erica Johnson, Felipe León, Sofia Morberg Jämterud, Anette Wickström and Ulrika Åstrand for your contributions to the careful organization of activities at the CMHB during this academic year. It is a joy to be part of and see how this joint field of ours is developing and growing.



Kristin Zeiler
DIRECTOR OF CMHB

Who We Are

DIRECTOR



Kristin Zeiler, Professor,
Department of Thematic Studies
- Technology and Social Change

COORDINATOR



Lisa Guntram, Associate Professor,
Department of Thematic Studies
- Technology and Social Change

COLLEAGUES



Peter Almqvist-Ingersoll, PhD Student,
Department of Thematic Studies
- Technology and Social Change



Réka Andersson, Associate Professor,
Department of Management and Engineering
- Business Administration



Maria Arnelid, PhD Student,
Department of Thematic Studies
- Gender Studies



Martin Berzell, Associate Professor,
Department of Culture and Society - Division of
Philosophy and Applied Ethics



Maria Björkman, Associate Professor,
Department of Culture and Society - Division of History,
Arts and Religious Studies



Sarah Bloem, PhD Student,
Department of Thematic Studies - Technology
and Social Change



Anna Bredström, Associate Professor,
Department of Culture and Society - Division of Migration,
Ethnicity and Society (REMESO)



Jelmer Brüggemann, Associate Professor,
Department of Thematic Studies - Technology
and Social Change



Eleanor Byrne, Postdoc,
Department of Thematic
Studies - Technology
and Social Change



Emmanuel Bäckryd, Associate Professor, Department
of Health, Medicine and Caring Sciences - Division of
Prevention, Rehabilitation and Community Medicine
and Senior Consultant Region Östergötland



Desirée Enlund,
Assistant professor,
Department of Thematic
Studies - Gender Studies



Isabel García Velázquez,
PhD student,
Department of Thematic
Studies - Gender Studies



Petra Gelhaus,
Consultant
Physician, Region
Östergötland



Jenny Gleisner, Associate
Professor, Department of
Thematic Studies
- Technology and Social Change



Hannah Grankvist, Faculty
Programme Director,
Faculty of Educational
Sciences (UV)



Erik Gustavsson, Associate Professor,
Department of Culture and Society - Division
of Philosophy and Applied Ethics and the
National Centre for Priorities in Health



Peter Holmqvist, Associate
Professor, Department of
Culture and Society
- Division of Social Work



Lars-Christer Hydén, Professor,
Department of Culture and Society
- Division of Ageing and Social Change:
Center for Dementia Research (CEDER)



Pier Jaarsma, Associate Professor,
Department of Health, Medicine and Caring
Sciences - Division of Society and Health:
National Centre for Priorities in Health



Ericka Johnson,
Professor, Department
of Thematic Studies
- Gender Studies



Edyta Just, Associate
Professor, Department
of Thematic Studies
- Gender Studies



Emilia Kangasjärvi, PhD
student, Department of
Thematic Studies
- Technology and Social Change



Alexandra Kapeller, PhD
student, Department of
Thematic Studies
- Technology and Social Change



Marit Karlsson, Adjunct Associate Professor,
Department of Biomedical and Clinical Sciences
- Division of Surgery, Orthopedics and Oncology
and Senior Consultant, Region Östergötland



Felipe León, Postdoc,
Department of Thematic
Studies - Technology
and Social Change



Judith Lind, Associate
Professor, Department
of Thematic Studies
- Child Studies



Anna Malmquist, Associate
Professor, Department of
Behavioural Sciences and
Learning - Division of Psychology



Sofia Morberg Jämterud,
Associate Professor,
Department of Thematic
Studies - Technology and Social Change



Ann-Charlotte Nedlund, Associate Professor,
Department of Health, Medicine and Caring
Sciences - Division of Society and Health:
National Centre for Priorities in Health



Marcus Persson, Associate
Professor, Department of
Behavioural Sciences and Learning
- Division of Education and Sociology



Rebecka Pestoff, PhD
Student, Department
of Biomedical and
Clinical Sciences



Ursula Reichenpfader,
MD, PhD, Department of
Rehabilitation Medicine,
Linköping University Hospital



Anja Rydén Gramner, Postdoc,
Department of Behavioural
Sciences and Learning - Division of
Education, Teaching and Learning



Lars Sandman, Professor, Department of
Health, Medicine and Caring Sciences
- Division of Society and Health:
National Centre for Priorities in Health



Ida Seing, Associate Professor,
Department of Behavioural
Sciences and Learning - Division
of Education and Sociology



Gunilla Sydsjö, Professor,
Department of Biomedical and
Clinical Sciences - Division of
Children's and Women's Health



Anette Wickström,
Associate Professor,
Department of Thematic
Studies - Child Studies



Harald Wiltzsche, Professor,
Department of Culture
and Society - Division of
Philosophy and Applied Ethics



Tom Ziemke, Professor,
Department of Computer
and Information Science
- Human-Centered Systems



Karin Zetterqvist-Nelson,
Professor, Department
of Thematic Studies
- Child Studies

CMHB Research

Research at CMHB is currently structured into twelve interdisciplinary cross-themes that cover 34 research projects.

Cross-themes in ongoing research at CMHB

- 1 The cross-theme of **Aging and Later Life with Illness** addresses the meanings of aging with illness, living as an elderly person with disease, care home living, and new tests and treatments for cognitive impairment or dementia, from social, cultural, institutional, communicative, philosophical, and ethical perspectives.
- 2 The **Bodies and Embodiment** cross-theme explores sociocultural, historical and philosophical conceptions of bodies, lived experiences of embodiment, bodily symptoms and bodily expressions, and assumptions and norms about specific body parts or bodily variations.
- 3 **Critical Categories and Concepts** engages with central concepts and categories within biomedicine, at clinics, and in medical humanities and bioethics. This cross-theme also examines the conceptual tools and perspectives we use when generating new knowledge.
- 4 The cross-theme of **Difficult Choices and Priority-Setting** addresses ethical and existential choices that arise at hospitals and in care homes, and when setting priorities in health-care. It engages with questions concerning whether to withdraw or withhold, or offer or abstain from, treatment in healthcare and care homes.
- 5 The **E-health, Digitalisation, Machine Learning** cross-theme explores communicative, ethical, social and material dimensions when robots, machine learning, new digital tools, information and communication technologies, and AI are introduced into healthcare.
- 6 The cross-theme of **Feminist and Intersectionality Theory** examines how ethnic boundaries, gender and age (as some examples) affect healthcare practices and are talked about and made sense of. This cross-theme also contributes to feminist and/or intersectional theory.
- 7 The cross-theme of **Knowledge Production** examines, for example, the production, movement and translation of knowledge. Focusing on medicine, healthcare, and related fields of inquiry, it addresses how different knowledge is valued, and the perspectives of different actors involved in knowledge production.
- 8 The **Mental Health/Ill-health** cross-theme examines conceptualizations and experiences of mental health and mental ill-health. It approaches the topic from individual, medical, social and historical perspectives.
- 9 The cross-theme of **Narratives and Communication** addresses communication in relation to health, illness, and health care. It engages also with the role and the use of narratives in medical education and conceptual work.
- 10 The **Professional Perspectives and Education** cross-theme explores health care professionals' roles, perspectives, and experiences. It addresses how health care professionals negotiate, manage, develop and transform their work and the settings in which they are engaged.
- 11 The cross-theme of **Subjectivity and Lived Experience** address experiences of, for example, illness/ill-health, healthcare encounters and medical diagnosis and treatment. It examines how individuals make sense of such experiences in relation to the broader contexts in which they are situated.
- 12 The cross-theme of **Family, Social Relationships, and Family-Making in Medicine** engages with ways in which families and social relationships are made sense of and negotiated in health care, the role of the family in health care and medicine, and how family-making is facilitated, but also challenged, through medical practices.

The chart on page 18–19 shows the relationships between the cross-themes and the current research projects. Some projects are cross-faculty collaborations, in the sense that they engage researchers from the Faculty of Arts and Sciences and researchers from the Faculty of Medicine and Health Sciences.

Futures Ahead Conference

Futures Ahead was originally meant to take place in 2020 but was postponed due to the pandemic. During June 15–17 2022, researchers in the fields of the humanities, the social sciences and medicine could finally meet in Linköping to discuss potential collaboration, common goals, and challenges in the field of medical humanities. The conference had about 80 participants over the three days. And, according to the organisers, their vision came true.

“It was so much fun! Engaged participants, interesting presentations, lots of international participants with many networking opportunities, as well as smooth organisation”, says coordinator Lisa Guntram at the Centre for Medical Humanities and Bioethics, Linköping University. “We are also very grateful for the lovely reception in the city hall, hosted by Linköpings kommun. It was such a generous gesture and a perfect ending of the first day of the conference, with speeches by Gustaf Appelberg, vice chair of the municipal council at the time, and Karin Axelsson, Deputy Vice-Chancellor at LiU”.

One of the keynote speakers, Professor Jane Macnaughton from Durham University, said: “It was fantastic being in Linköping in midsummer and the weather was gorgeous enabling lunches outside meeting with new colleagues. The conference was amazing for making connections with people from across the field with aligned interests. I had brilliant conversations with colleagues interested in marginalised women’s health which stimulated my work on meno-

pause at work and have led to involvement in a new women’s health network. A key feature of the conference for me was the high quality of paper which used specific subject matter, such as Tourette’s syndrome, to speak of higher-level theoretical questions such as medical objectification”.

Another of the keynote speakers at the conference was Professor Jonathan Metzl, from the Center for Medicine, Health, and Society at Vanderbilt University. Starting with his book *Dying of Whiteness: Racial Resentment, and the Politics of the Pandemic*, Metzl talked about the politics of racial resentment and its impact on public health. Drawing on systematic analysis of health data, Metzl showed how the policies of the Tea Party and Donald Trump have made life less healthy, harder, and shorter in the “white” populations who supported them.

“Ultimately, it demonstrates just how much white America would benefit by emphasizing cooperation, rather than by chasing false promises of supremacy”, says Metzl. Reflecting about the future and what other countries could learn from this research, Metzl added:

“The forces that divide people are very strong right now. My best tip would be to not just trust that common sense will prevail. Work preventively and with a good strategy to prevent the forces that play on people’s fears from winning in the end”.

There was also an exhibition held at the conference about Norm Critical Design and Medical Humanities by Anna

Isaksson and Emma Börjesson at Halmstad University, and their colleagues Malin Björklund, Hajar Sadequi and Karin Ehrnberger. The exhibition visualised a research project in which, among other topics, surveys evaluating the mental health of school children were conducted. The research project contained five subprojects, one of which was conducted by Anette Wikström, Sofia Kvist Lindholm and Kristin Zeiler at Linköping University. This subproject investigated the meanings and effects the questions had on the young people answering them and what thoughts the survey evoked. Results from this part of the project were engaged in yet another subproject on norm critical design and screening.

“The survey is questions on a piece of paper, but how does it affect those who answer? We have visualised the questions using medical instruments. Take the question ‘How do you perceive your body?’, which the survey asks you to grade such as ‘just right’, ‘too thin’, ‘far too fat’. Perhaps the pupil who is asked this question has not thought about this at all before. In this case, we have depicted the question with a medical measuring tape that aims to stage how questionnaire questions can reinforce the critical view of your own body as deviating from the norm”, says Emma Börjesson.

“This conference is about strengthening the medical humanities nationally and internationally. It has brought out the great potential of the field, as well as the vibrant engagement in it”, Kristin Zeiler and Lisa Guntram conclude.



Medical Humanities and COVID/Post-COVID Challenges Workshop

In autumn 2021, CMHB received funding for three international workshops. The second of these workshops took place in Norrköping in September 2022. The topic of the workshop was a medical humanities perspective on the challenges of the pandemic and Post-COVID Syndrome. It explored health inequalities, making use of, for example, intersectional perspectives that attend to how social categories of e.g., gender, age, able-bodiedness or race/ethnicity may affect the experiences and treatment of COVID/post-COVID, and brings together scholars across the world.

The workshop, held in the Museum of Work in the heart of Norrköping,

gathered around 20 participants from across the world (such as Sweden, Denmark, Great Britain, USA, Brazil) with different backgrounds such as medicine, ethics, sociology of medicine, anthropology, and philosophy.

The aim of the conference was to enable and inspire dialogues between different perspectives, one of the conference organisers, Sofia Morberg Jämterud, explained:

“Since the pandemic situation continues to affect societies and individuals, and given the complexity of this syndrome, we wanted to organize a research conference where interdisciplinary analyses of meanings, expressions, implica-

tions, and co-constituting factors are required for apt and equal healthcare and societal response”.

Especially, Sofia added, there were many fruitful discussions taking place during the conference:

“There were many interesting presentations which we were very grateful for. However, a special part of the event was to be able to gather for round table discussions at Wadströmska villan. Academic discussions in a beautiful surrounding are unbeatable”.

Some contributions from the workshop will be part of a special issue on COVID/post-COVID in the *Journal of Medical Humanities*.



“After the Pandemic: Unexpected Collaborations, Innovations and Insights”, Scientific Salon 2022

The pandemic has created and continues to create challenges of an existential and social nature as well as in care and medical settings. Such challenges occur on local, national, and global levels. The pandemic has also resulted in, and demanded, unexpected collaborations that in turn have led to new insights and innovative ways of understanding and examining the challenges and consequences of the pandemic. In September 2022, CMHB engaged with these challenges when arranging its second Scientific Salon, on the topic “After the Pandemic: Unexpected collaborations, innovations and insights”. Focusing

specifically on unexpected collaborations, insights and innovations, the panelists also gave examples of promising interdisciplinary collaborations and how they can be facilitated.

Presenting their views on the panel were Mathilda Björk, professor, Department of Health, Medicine and Caring Sciences (HMC), LiU; Krister Björkregren, CEO, Region Östergötland; Iréne Nilsson Carlsson, Senior Public Health Adviser, National Board of Health and Welfare; and Kristin Zeiler, professor, Department of Thematic Studies and the Centre for Medical Humanities and Bioethics, LiU.

Central to CMHB’s scientific salons are in-depth dialogues which invite actors from different fields to bring perspectives to a creative, reflexive and critical discussion on a shared topic of interest. In an age that seeks rapid answers, the scientific salon offers the opportunity to reflect on serious questions, from several perspectives. In the round-table discussions that followed, panelists and the invited guests – from regional and national levels working in healthcare and social care, both within and outside academia – discussed things we have learned and that have become possible despite, and sometimes due to, the pandemic.



Strimman

– Open Lectures in Medical Humanities and Bioethics

It is a good way to do a “stress test” of your research against the public’s opinion and perspectives and it provides an opportunity to get input on how people “on the street” think about the questions we are dealing with said Lars Sandman, one of the affiliated researchers who gave a talk at *Strimman* – a series of open lecture series organized by the Faculty of Arts and Sciences at LiU which was hosted by CMHB during the academic year 2022/2023.

In a series of six evening lectures, researchers at CMHB spoke on various topics within the medical humanities, engaging with questions such as “What is it like to experience severe illness? How can future delivery care be developed? How is priority setting in health care to be done when resources are limited?”

“Within ethics you sometimes engage in rather abstract discussions, but they often have practical implications. I think researchers should practise the art of explaining the relevance of what you do to people outside your field. *Strimman* was an excellent opportunity for such practice”

ERIK GUSTAVSSON

“The Strimma-lecture was a good opportunity to formulate our analytic thoughts in the project this far and in the end get the result wrapped up as an appealing and useful video”

ANETTE WICKSTRÖM AND JUDITH LIND

Introducing each of the events was Ulf Melin, dean of the Faculty of Arts and Sciences, and Sofia Morberg Jämterud, assistant professor at the Department of Thematic Studies and affiliated with CMHB.

“I’m very impressed by this year’s organizing and content of *Strimman*” concluded Ulf Melin as the series came to an end in April. “Having researchers from CMHB onboard has showed the true interdisciplinary character of their research and also demonstrated research of high quality and relevance. I also appreciate the dialogic nature of the lectures and the engaged scholarship this year”.

The wide range of questions that engage scholars in medical humanities and bioethics was highlighted throughout the lectures. Reflecting from different perspectives on current changes in the roles of academically trained physicians, the lecture by Desirée Enlund and Emmanuel Bäckryd covered topics from vir-

tue ethics to digital health care services. “It was rewarding to present a research project that I’m just about to embark on, instead of the finished result – which is what we as researchers usually communicate to the public” said Desirée, whose current research concerns individual motivations and collective responses to gig work among medical doctors. Emmanuel addressed two related and ever-present question in his talk “What is really a good doctor?” and “What will happen to the role of the doctor in the future?”

Especially, Emmanuel added, “It was very rewarding for me who have my

“It was a really inspiring and fun experience to hold a lecture together with Petra Gelhaus, who is both a researcher and a practitioner within the field. Petra started off with the practitioner perspective, giving examples from her experience of chairing fiction seminars in medical education, and I could follow up with the researcher perspective on what these experiences can mean for medical students in their professional development”

ANJA RYDÉN GRAMNER

degree in medicine to get to a talk at an event organized by the Faculty of Arts and Sciences and to get to opportunity to reflect on continuities and discontinuities in the doctor's role over time".

All of the lectures were recorded and made available on YouTube in order to open the dialogue up to new audiences. "Strimman was a perfect opportunity to reach out with one of CMHB's key areas

of attention – the relevance of medical humanities research" concluded Jelmer Brüggemann, who together with Maria Björkman, was invited to write a piece for *Humtank* – a think tank for the humanities resulting from a collaboration between a dozen Swedish universities. Their reflection piece "Medicinsk humaniora – vad ska vi ha den till?" is now available at <http://humtank.se/blogg/>.

“ It feels particularly good that Strimman is published online so that more people can get access. It becomes a way of reaching out to a wider audience than typical academic events allow ”

LISA GUNTRAM

Strimman lectures and lecturers 2022/2023

VARFÖR SKA LÄKARSTUDENTER LÄSA SKÖNLITTERATUR?

Petra Gelhaus, överläkare, docent i medicinsk filosofi och etik

YouTube: <https://youtu.be/POp7aKoUqJk>

Anja Rydén Gramner, post doktor, IBL

YouTube: <https://youtu.be/ECgalZAqJAQ>

LÄKARROLL I FÖRÄNDRING

Emmanuel Bäckryd, överläkare, docent i smärtmedicin.

YouTube: <https://youtu.be/vrMgGjRlq20>

Desirée Enlund, biträdande universitetslektor, Tema genus.

YouTube: https://youtu.be/r_8RLJVN1Zc

VEM SKA LEVA OCH VEM SKA DÖ?

Erik Gustavsson, universitetslektor i tillämpad etik

Lars Sandman, professor i hälso- och sjukvårdsetik

YouTube: <https://youtu.be/S3Eo3BUNVv8>

HISTORISK OCH SAMHÄLLSVETENSKAPLIG FORKNING OM MEDICIN - VAD SKA VI HA DEN TILL?

Maria Björkman, universitetslektor i historia

Jelmer Brüggemann,

universitetslektor i Tema teknik och social förändring

YouTube: <https://youtu.be/00KUB8cqH6Q>

TONÅRSTJEJER, INFLUENCERS OCH REPRESENTATIONER AV PSYKISK HÄLSA

Judith Lind, universitetslektor i Tema barn

Anette Wickström, biträdande professor i Tema barn

YouTube: <https://youtu.be/00lgZ3seWII>

BRISTER OCH BRISTNINGAR I SVENSK FÖRLOSSNINGSVÅRD

Jenny Gleisner,

universitetslektor i Tema teknik och social förändring

Lisa Guntram,

universitetslektor i Tema teknik och social förändring

YouTube: <https://youtu.be/ygbZq1OWtuY>

Lennart Nordenfelt

Appointed Honorary Doctor

On 27 May 2023, Lennart Nordenfelt, senior professor at Marie Cederschiöld University College in Stockholm, was appointed Honorary Doctor by the Faculty of Medicine and Health Sciences, Linköping University. Nordenfelt has been central to the development of philosophy of medicine, in Sweden and internationally, and has contributed to the early development of medical humanities at Linköping University from the beginning of the 1980s.

“I was genuinely surprised by this nomination and appointment, and very happy for this recognition from the Faculty of Medicine and Health Sciences at Linköping University”, Nordenfelt says.

Nordenfelt has offered conceptual analyses of the concepts of dignity, disease and health and developed a theory of health within the philosophical field of action theory. In Nordenfelt's theory of health, health is understood as an individual's ability to realise its vital goals under standard circumstances. If related to the basic distinction between two broad understandings of health as either bio-statistical (and aiming at a theoretical and value-free concept of health, where the analysis rests on biological functions and statistical normality and health is understood as absence of disease) or holistic and normative (as, for example, based on the notion of ability to realise vital goals while disease is understood as a state or process that typically affect someone's health in a negative

way), Nordenfelt's theory is holistic and normative. Further, Nordenfelt had a central role in the development of *Tema Hälsa och samhälle* – often translated as the Department or Division of Health and Society – at Linköping University. This division was a research-oriented environment comprised of researchers from different humanities and social sciences strands with a shared thematic focus on health, illness, disease, health care etc. Nordenfelt was part of the Division of Health and Society from 1982 to 2014, the last two years as professor emeritus.

“Starting to work at the Division of Health and Society was very different, and even a bit of a shocking experience, in the light of my past experiences at a traditional philosophy department at Uppsala University. When I started, there were no other philosophers or humanities scholars at this division. At this time, colleagues at the Division of Health and Society included sociologists and health economists. A few years later, the Division of Health and Society also comprised historians and history of ideas scholars, and later on, anthropologists. It was very different from the older universities in Sweden, in several aspects. The Division of Health and Society was not only thematically focused, and there was also an expectation on senior researchers to apply for externally funded research projects and to build research groups through externally funded projects. This

was central from the very start, and nothing I had encountered before starting at Linköping University. However, I was very generously welcomed to the division, and received funding also for two PhD students. When I left Linköping University, I had been the main supervisor of 22 graduate students at the Division of Health and Society”, Nordenfelt reflects.

The Division of Health and Society was inaugurated in 1981. It is the earliest example of medical humanities or health humanities – the latter being one of the possible translations of the Swedish term *humanistisk hälsoforskning* that commonly was used at this time – in an institutionalized form in Sweden. Nordenfelt describes the medical/health humanities, and particularly philosophy of medicine, landscape at this time:

“In the 1970s, philosophy of medicine was not an existing field in Sweden. I had started to work with conceptions of disease at this time, but there were only a few others within philosophy of medicine. However, we did organize the first Nordic symposium on philosophy of medicine in Stockholm in 1982 with philosophers of medicine and health care professionals from Nordic and European countries, and from the USA. A few years later, the European Society for Philosophy of Medicine and Health Care was inaugurated. This society was very inclusive from its inception, with philosophers, health care professionals and

medical sociologists, as some examples, participating in its conferences from the start”, Nordenfelt explains.

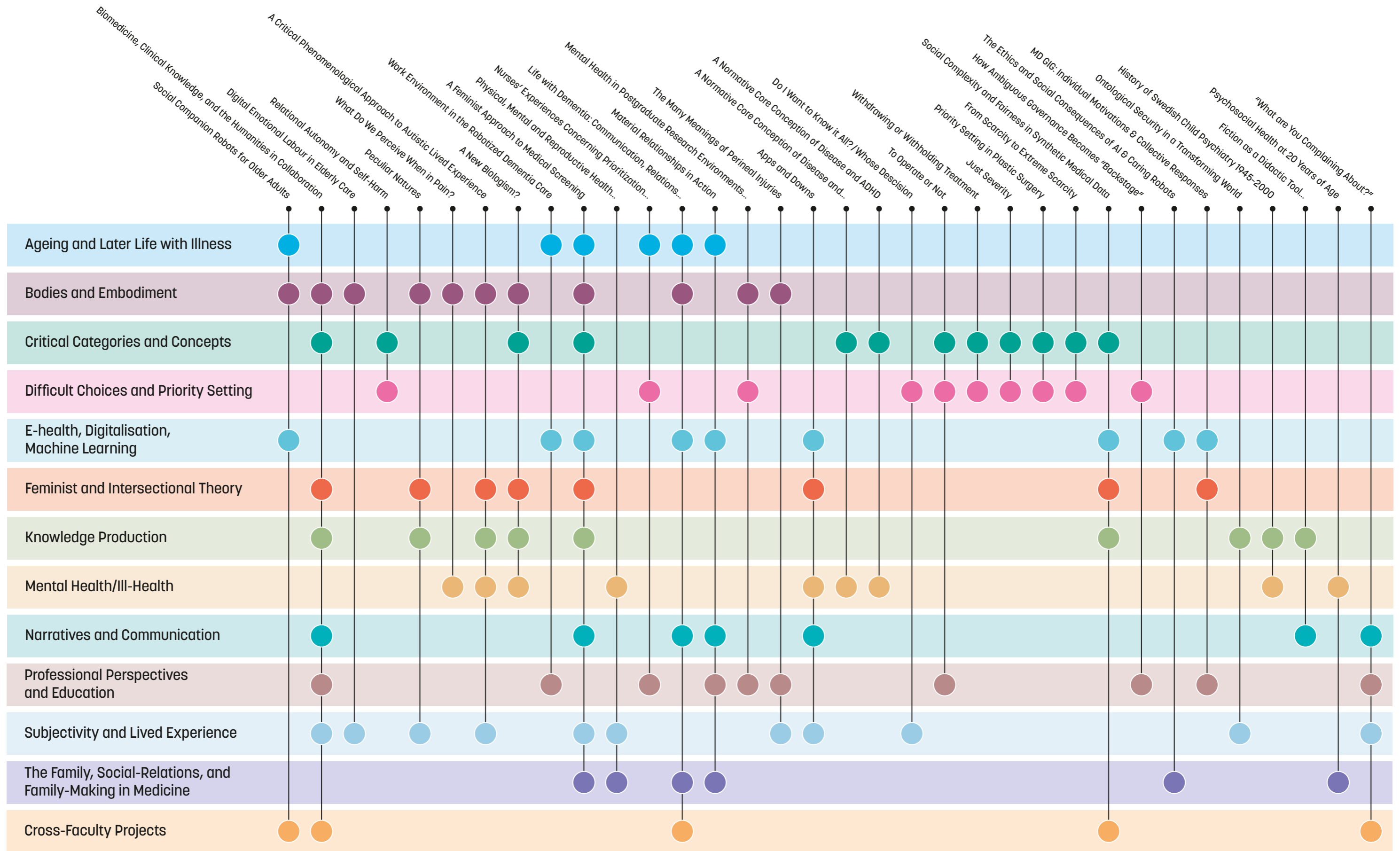
“At this time, we did use the term medical humanities occasionally, but more often, we talked about *humanistisk hälsoforskning*. And as one example of an early larger interdisciplinary and international research project, I and some of the colleagues at the Division of Health and Society were part of the project Goals of Medicine. This project was led by researchers at the Hastings Center in the USA, lasted from 1994 until 2000, and involved philosophers of medicine, medical sociologists, health care economists, religious studies scholars and researchers from primary care, pediatrics, surgery, psychiatry, and the nursing sciences”, Nordenfelt recalls.

In addition to being a much-appreciated colleague and professor at the Division of Health and Society, Nordenfelt has been President of the European Society for Philosophy of Medicine and Health Care, between 1999–2004.



Curious about the early years of medical/health humanities in the 1980s and 1990s in Sweden?

See Nordenfelt, L., ed. (1993) *Tema Hälso- och sjukvården i samhället inför 2000-talet*, Meddelande 1993:2, ISSN 0284-5725; Perselli, J., Tengland, P-A., (2001) *Tema H:s medverkan i det internationella projektet 'The Goals of Medicine'*, Meddelande 2001:2, ISSN 1400-9773, and Qvarsell, R., Torell, U., eds (2001) *Humanistisk hälsoforskning: en forskningsöversikt*. Lund: Studentlitteratur.



Project Descriptions 2022/2023

A Critical Phenomenological Approach to Autistic Lived Experience

This PhD project examines how autistic people make sense of the world in relation to the broader social context in which we are situated. The research project combines a critical phenomenological theoretical perspective with qualitative research methods to analyse autistic experiences. It is designed to

contribute to larger discussions about subjectivity and normativity. Moreover, in taking an intersectional approach to autistic lived experience as its starting point, the project aims to problematise dominant forms of knowledge production about autism.

PROJECT MEMBERS

Sarah Bloem (Department of Thematic Studies, LiU)

FUNDING

LiU, Faculty funding

TIME PERIOD

2021 - 2025

A Feminist Approach to Medical Screening

This is an interdisciplinary medical humanities project that analyses subjectivity, agency and the normativity of and within screening practices through a mixed-methods approach and a novel combination of theoretical perspectives (feminist phenomenology and feminist science and technology studies, which allow for analyses of lived experience and knowledge production practices). Its

empirical foci are screening for cognitive impairment and dementia, preconception genetic screening, and the screening of school children's mental health. The project is designed to contribute to discussions of screening ethics in new ways, and parts of its results will be transformed into artefacts that stimulate reflection on values and norms within screenings.

PROJECT MEMBERS

Kristin Zeiler (PI), Alexandra Kapeller, Sofia Morberg Jämterud, Martin Gunnarson, Anette Wickström (the Department of Thematic Studies, LiU), Anke Snoek (Maastricht University), Malin Björklund (Malin Björklund EF), Anna Isaksson, Emma Börjesson, Hajar Sadequi (Halmstad University), Karin Ehrnberger (Royal Institute of Technology)

FUNDING

Swedish Research Council, Consolidator Grant. Co-Funding: LiU, faculty funding

TIME PERIOD

2017 - 2023

A New Biologism? How Medical Research, Policy and Clinical Practice Approach Ethnic Differences in Health

The project seeks to critically examine the practice of using national and ethnic categories in relation to migrants' health in a Swedish context. The overall aim of this research is to query the possible shift towards a biological understanding of ethnic differences in contemporary Sweden, and its impact on

equal treatment. The project will meet its aim through two case studies: Psychiatric Ill-health (Depression/Anxiety) and Diabetes (Type 2) in Sweden. Quantitative and qualitative methods are used, and particular attention is paid to the translation between medical science, policy and clinical practice.

PROJECT MEMBERS

Anna Bredström (Department of Culture and Society, LiU), Shai Mulinari (Lund University)

FUNDING

Swedish Research Council

TIME PERIOD

2020 - 2024

A Normative Core Conception of Disease and ADHD

Spectrum states such as ADHD that range from normal to highly dysfunctional (with the same underlying physiology) represent a practical challenge for the healthcare system. A

normative core conception of disease aims to give better practical orientation as to how and why a (dys)function can be best classified as a disease and be treated by healthcare facilities.

PROJECT MEMBER

Petra Gelhaus (Psychiatry Clinic: Motala/Mjölby, Region Östergötland)

FUNDING

Follow-up project to a larger project funded by the Heinrich-Hertz-Stiftung, Germany 2010/2011 "A Normative Core Conception of Disease", 2013-2015; LFoU-medel "Theoretical, Ethical and Phenomenological Aspects of ADHD"

TIME PERIOD

2013-2022

A Normative Core Conception of Disease and Personality Syndromes

It is challenging and ethically risky to explain a dysfunction as being a consequence of a defect of the whole personality. A normative core conception of disease aims to give a

background to differentiate the dysfunctions that reflect a certain personality in a spectrum from normal, specific, and dysfunctional/harmful within each individual.

PROJECT MEMBER

Petra Gelhaus (Psychiatry Clinic: Motala/Mjölby, Region Östergötland)

FUNDING

Follow-up project to a larger project funded by the Heinrich-Hertz-Stiftung, Germany 2010/2011

TIME PERIOD

2018-2022

Apps and Downs: Mental Health and Teenage Girls' Interpretations of Social Media Content

Combining digital health studies and childhood studies with empirical research, the project examines the relationship between teenage girls, mental health, and social media by analysing the discourses on mental health in posts made by influencers, as well as how

teenage girls interpret and relate to that content. Drawing from the research method of ethnography for the internet, material published online is analysed parallel to the analysis of offline interviews with teenage girl followers.

PROJECT MEMBERS

Anette Wickström (PI) and Judith Lind (both at the Department of Thematic Studies, LiU)

FUNDING

Swedish Research Council for Health, Working Life and Welfare

TIME PERIOD

2021-2023



Biomedicine, Clinical Knowledge, and the Humanities in Collaboration: A Novel Epistemology for Radically Interdisciplinary Health Research and Policy-Work on Post-COVID-19 Syndrome

The project develops a meta-epistemological framework for interdisciplinary health research and a novel model for health care policy-work, focused on post-COVID-19 syndrome as an emergent multidimensional health challenge that requires being studied in its biomedical, social, political and embodied dimensions. Given the complexity of this syndrome, interdisciplinary analyses of its meanings, expressions, implications and co-constituting factors are required for apt healthcare, societal response, and policy-making. The project offers such analyses through a unique combination of perspectives from the humanities, the social sciences, and biomedicine, and specifically from neuroscience, rehabilitation medicine, intersectional theory, medical sociology and science & technology studies (STS), philosophy of medicine and science, and medical ethics. It consists of five subprojects, three of which are on-going:

Subproject 1: Post-COVID is a complex health challenge, which makes multidimensional analyses urgent. The aim of subproject 1 is to develop a meta-epistemological framework for such analyses, and it investigates the intricate relations between the wider context in which biomedical and medical humanities

research is done, their “constitutive means” such as instruments or methodologies, and the kinds of objectivities or results that are constituted.

Subproject 2: A large component of post-COVID syndrome has been attributed to symptoms involving the brain/nervous system, such as fatigue and cognitive impairment, yet these symptoms remain pathophysiologically and phenomenologically enigmatic. The aim of subproject 2 is to investigate subjectivity, affectivity, and neural processes of fatigue in PCS, through a combination of approaches and methods within rehabilitation medicine, neuroradiology, neurobiology, neuropsychology and qualitative phenomenological philosophy.

Subproject 3: Subproject 3 analyses the emergence/creation of the post-COVID diagnosis, and how this novel diagnosis, and post-COVID rehabilitation, are made sense of by stakeholders such as patients, relatives, health care personnel at post-COVID units, and other interest organisations and state authorities. It studies sense-making between patients and professionals with an intersectional focus on how ethnicity and other social categories affect rehabilitation.

PROJECT MEMBERS

Kristin Zeiler (PI, subproject 2 co-leader), Petter Almqvist-Ingersoll; Eleanor Byrne; Jelmer Brüggeman, Lisa Guntram, Ericka Johnson (subproject 1 leader); Felipe León; Sofia Morberg Jämterud (the Department of Thematic Studies, LiU), Anna Bredström (subproject 3 leader), Erik Gustavsson, Harald Wiltische (the Department of Culture and Society, LiU), Ida Blystad (Center for Medical Image Science and Visualization, LiU and Region Östergötland), Anestis Divanoglou, Ulrika Birberg Thornberg (the Department of Rehabilitation Medicine, Region Östergötland), Richard Levi (subproject 2 co-leader, (the Department of Rehabilitation Medicine, Region Östergötland and the Department of Health, Medicine and Caring Sciences, LiU), David Engblom (the Department of Biomedical and Clinical Sciences, LiU). International collaborators: Jane Macnaughton, Angela Woods (both at Durham University), Jonathan Metz (Vanderbilt University), Janet Shim (UC San Francisco), Kevin Aho (Florida Gulf Coast University), Claire Crignon (Sorbonne University)

FUNDING

Swedish Research Council, Interdisciplinary Research Environment Grant. Co-Funding: LiU, faculty funding

TIME PERIOD

2022 - 2027



Digital Emotional Labour in Elderly Care

Digital work tools can facilitate care work for caregivers but also challenge traditional care ideals. In this project, caregivers' expression of and handling of emotions is investigated in connection with the use of digital tools to practice caring work with users and col-

leagues. By providing knowledge about caregivers' feelings about digital work in elderly care, the project will contribute to showing how digitalization can take place in a way that makes sense in relation to caregivers' ideals of care.

PROJECT MEMBERS

Marcus Persson (PI, Department of Behavioural Sciences and Learning LiU), Elin Thunman (Uppsala University), Clara Iversen (Uppsala University), David Redmalm (Mälardalen University)

FUNDING

AFA Insurance

TIME PERIOD

2023 - 2026

Do I Want to Know It All? / Whose Decision?

A qualitative study on the perspectives of patients with malignant brain tumours on information about diagnosis and prognosis, and the treatment decision-making process.

PROJECT MEMBERS

Annika Malmström, Marit Karlsson, Peter Milos, Munila Mudaisi, Lisa Åkesson (all at the Department of Biomedical and Clinical Sciences, LiU, and Region Östergötland), Helena Bruhn (Department of Biomedical and Clinical Sciences, LiU, and Ryhov Hospital, Jönköping), Michael Strandeus (Ryhov Hospital, Jönköping)

FUNDING

Swedish Research Council for Health, Working Life and Welfare and ALF funding

TIME PERIOD

2016 - 2022

Fiction as a Didactic Tool for Developing Emotional Professional Skills in Medical Education

The focus of this project is to study how fiction in medical education can contribute to emotional professional skills such as empathy. Using a discursive psychological framework,

the project uses video-ethnography to capture fiction seminars as well as written assignments as part of the regular curriculum of three medical schools in Sweden.

PROJECT MEMBERS

Katarina Eriksson Barajas (PI, Department of Behavioural Sciences and Learning, LiU), Sally Wiggins Young (Department of Behavioural Sciences and Learning, LiU), Anja Rydén Gramner (Division of Behavioural Sciences and Learning, LiU)

FUNDING

Swedish Research Council

TIME PERIOD

2023 - 2026

From Scarcity to Extreme Scarcity

The project draws on the ethical discussion about health care priority setting. The overall aim is to relate this discussion to a situation of crisis and war.

PROJECT MEMBERS

Erik Gustavsson (Department of Culture and Society, LiU)

FUNDING

The Swedish Civil Contingencies Agency (MSB)

TIME PERIOD

2021 - 2023

History of Swedish Child Psychiatry 1945–2000: Scientific Underpinnings and Changing Notions of Children and Childhood

The project aims to illuminate historical changes and continuities in Swedish child psychiatry, with a specific interest in knowledge production in scientific and professional practice. It shows how this period encompassed a rapid development of child

psychiatric knowledge in Sweden, shaped by both international trends and the specificities of the Swedish nation-state context. The research project further focusses on how child psychiatric knowledge has been disseminated to the public through media and other arenas.

PROJECT MEMBERS

Karin Zetterqvist Nelson (Department of Thematic Studies, LiU) and Peter Holmqvist (Department of Culture and Society, LiU)

FUNDING

Swedish Research Council for Health, Working Life and Welfare 2014–2018; LiU, faculty funding 2019–2024

TIME PERIOD

2014–2024

How Ambiguous Governance Becomes “Backstage” Practice in Healthcare: Professional Reasoning and Practice in the Case of Palliative Care

This project studies how various forms of knowledge, values and priorities are, in practice, handled in processes “backstage”, when

professions are challenged to handle everyday decision-making situations.

PROJECT MEMBERS

Ann-Charlotte Nedlund, Daniel Boethius, Barbro Krevers (all at the Department of Health, Medicine and Caring Sciences, LiU)

FUNDING

Swedish Research Council for Health, Working Life and Welfare. Co-Funding: LiU, faculty funding

TIME PERIOD

2018–2024

Just Severity – Distributive Justice in Health-Care – Why Should Severity of Ill Health Matter?

The aim of this project is to explore the normative rationale of severity as a factor in distributing resources in healthcare, and arrive at a well-founded and acceptable conceptualization. This is done by exploring the concept

of severity from a normative perspective, testing conceptualizations in health economic modulations and analysing the legal situation for severity in Sweden.

PROJECT MEMBERS

Lars Sandman (PI), Martin Henriksson (both at Department of Health, Medicine and Caring Sciences, LiU) Erik Gustavsson (Department of Culture and Society, LiU), Niklas Juth, Moa Kindström Dahlin (both at Uppsala University)

FUNDING

Swedish Research Council

TIME PERIOD

2022–2024

Life with Dementia: Communication, Relations and Cognition

The program investigates what people living with dementia can do in collaboration with others and the importance of environmental networks in enabling social inclusion and participation. In sub-projects, we look at the

organisation of collaboration, persons living with dementia as experts, and how ICT can enhance communication among, for instance, people with diverse linguistic and cultural backgrounds.

PROJECT MEMBERS

Lars-Christer Hydén (PI) (Department of Culture and Society, LiU), Anna Ekström, Charlotta Plejert (both at the Department of Biomedical and Clinical Sciences, LiU), Nicole Müller (University College Cork, Ireland), Gunilla Jansson, Ali Reza Majlesi (both at Stockholm University), Christina Samuelsson (Karolinska Institutet), Ulrika Ferm (Gothenburg University)

FUNDING:

Swedish Research Council for Health, Working Life and Welfare, Programme funding

TIME PERIOD:

2017–2022

Material Relationships in Action: the Social Psychology of Social Robots in Dementia Care

Based on ethnography, document analysis, and multimodal conversation analysis, the project will examine the social relationships between caregivers, patients, and social robots in dementia care, and the practices by which robots and people become social actors. This is an empirical contribution to the under-

standing of the potentials and challenges of employing social robots in care, and a theoretical (material social psychology and post-humanist theory) contribution to our knowledge of how material objects operate in social relationships.

PROJECT MEMBERS

Marcus Persson (PI) (Department of Behavioural Sciences and Learning, LiU), David Redmalm (Mälardalen University), Clara Iversen (Uppsala University)

FUNDING

Swedish Research Council

TIME PERIOD

2020 - 2022

MD GIG: Individual Motivations & Collective Responses to gig Work among Medical Doctors

MD GIG examines the transition to digital service provision in the public services by exploring the rise of the 'online doctor' that provides consultations between doctors and patients via app-based mobile phone technol-

ogy. The aim is to explore the digitalization of healthcare from a worker perspective to highlight the preconditions that give rise to gig work in the healthcare sector and explore the potential consequences at different scales.

PROJECT MEMBERS

Desirée Enlund (PI) (Department of Thematic Studies, LiU)

FUNDING

Swedish Research Council

TIME PERIOD

2022 - 2025

Mental Health in Postgraduate Research Environments in Sweden

This project constitutes a response to the recent research findings that bring to the fore the worsening of the mental health of PhD candidates. It strives to reflect on and contribute to the discourse and practices of Feelgood, a Swedish company that offers occupational health services and health counselling, concerning mental health in postgraduate research environments and it

also aims to reflect on and advance university pedagogies with regard to the mental health of PhD candidates. Furthermore, it wants to propose necessary structural changes in research environments and necessary changes on cultural, social and economic levels linked to PhD candidates' intersecting aspects of identity such as gender/sex/ethnicity/class/age vis-à-vis their mental health.

PROJECT MEMBER

Edyta Just (Department of Thematic Studies, LiU)

FUNDING

N/A

TIME PERIOD

2021-



Nurses' Experiences Concerning Prioritization for Health and Wellbeing of Older Nursing Home Residents During the COVID-19 Pandemic in Sweden: A Qualitative Study

An interdisciplinary study with a qualitative descriptive design followed by a normative analysis. The project is a hybrid of a nursing study and a study in empirical ethics, combining descriptive data on nurses' experiences concerning prioritisation for the health and

well-being of older nursing home residents during the COVID-19 pandemic with a normative analysis relating these experiences to the discussion on distributive justice and equality in healthcare.

PROJECT MEMBERS:

Pier Jaarsma (PI), Tiny Jaarsma, Lars Sandman (all at the Department of Health, Medicine and Caring Sciences, LiU), Thérèse Bielsten (Jönköping University), Suzanne Cahill (Trinity College Dublin)

FUNDING

Swedish Research Council for Health, Working Life and Welfare and The National Centre for Priorities in Health, LiU

TIME PERIOD

2020 -

Ontological Security in a Transforming World

This project combines political-economic, sense-making, and phenomenological analyses of societal transformations in relation to climate change, and explores how interactions between changes in the practical sphere (e.g. routines and behaviours, climate change adaptation action, and technical innovations), the political sphere (e.g. transformation governance), and the personal sphere (e.g. lived experiences of health, well-being, risk,

loss and damage) shape the transformative process. The project's empirical focus is on Fiji and other Pacific Island states, and it contributes perspectives from environmental and medical/health humanities to debates on climate-related security, including a more thorough understanding of the challenges to health and security during a period of radical environmental change.

PROJECT MEMBERS

Victoria Wibeck (PI, the Department of Thematic Studies, LiU), Priyatma Singh (University of Fiji, Fiji), Pamela Feetham, Apisalome Movono, Franco Vaccarino (all at Massey University, New Zealand), Stephen Woroniecki, Björn-Ola Linnér, Kristin Zeiler (all at the Department of Thematic Studies, LiU)

FUNDING

The project is part of the research program The Seedbox, A Mistra-Formas Environmental Humanities Collaboratory. Funded by Mistra and Formas. Co-Funding: LiU, faculty funding

TIME PERIOD

2020 - 2022



Peculiar Natures: Slavery, Environment, and Nationalism in the Southern States, 1789–1865

Peculiar Natures tells a previously untold story about 19th-century American nature and 19th-century American slavery in a time and place where nature had material ramifications – medical, social, legal for enslaved black people and for white enslavers. Nature in the southern states before the Civil War was a factor in the development of ideas about the constitution of white and black bodies, about what made those bodies healthy or diseased,

about who counted as a person, and about who made up the body politic of the nation. This book thus tells the story of how seemingly benign ideas about the natural world, including its climates, diseases, plants, and waters, metamorphosed into white justifications of black enslavement and undergirded the white supremacist architecture of the Confederate government.

PROJECT MEMBERS

Lauren E La Fauci (Department of Thematic Studies, LiU)

FUNDING

N/A

TIME PERIOD

2019 – 2022

Physical, Mental and Reproductive Health among Sexual and Gender Minorities During and After Pregnancy and Childbirth

Mental illness increases the risk of adverse birth outcomes, trauma, and complications. Sexual and gender minority (SGM) people experience increased mental illness and are at increased risk of these complications. This project aims to increase knowledge about

SGM people's physical, mental, and reproductive health during and after pregnancy and childbirth, as such knowledge is fundamental for improving the reproductive health of this group.

PROJECT MEMBERS

Anna Malmquist (PI) (Department of Behavioural Sciences and Learning, LiU), Katri Nieminen (Department of Biomedical and Clinical Sciences, LiU, LiU), Hanna Grundström (Department of Health, Medicine and Caring Sciences, LiU)

FUNDING

LiU, faculty funding

TIME PERIOD

2022 – 2026

Priority Setting in Plastic Surgery

Publicly financed plastic surgery is a borderline area in publicly financed healthcare, struggling to draw the line between what

should be financed and what should not. This project explores the ethical rationales and economic impact of delimiting plastic surgery.

PROJECT MEMBERS

Lars Sandman, Thomas Davidson (both at the National Centre for Priorities in Health, LiU), Emma Hansson (Sahlgrenska University Hospital, Gothenburg)

FUNDING

National Centre for Priority Setting in Health Care, LiU

TIME PERIOD:

2019 –

Psychosocial Health at 20 Years of Age – a Longitudinal Study with a Gene-Trauma Approach

For the past 30 years, the increased prevalence of depression and anxiety among young women has received particular attention. However, even though knowledge regarding risk factors for mental illness is substantial, knowledge of aetiology and the mechanisms that cause mental illness is scarce. In order to study the course of mental illness and its associated risk factors, longitudinal family cohort

studies of high quality will be required. The SESBiC-study is a unique family-oriented longitudinal study in which approximately 1700 children-parent pairs have been followed from birth. The children have been followed from birth up to 20 years of age, and the mothers from pregnancy up to the year in which the children were 24–25 years of age.

PROJECT MEMBERS

Gunilla Sydsjö (PI) Sara Agnafors, Marie Bladh (all at the Department of Biomedical and Clinical Sciences, LiU, and Region Östergötland), Carl-Göran Svedin (Ersta Sköndal Bräcke Högskola)

FUNDING

Swedish Research Council for Health, Working Life and Welfare and SKANDIA

TIME PERIOD

2020 – 2023

Relational Autonomy and Self-harm. Ethical Backgrounds to “Brief admission” (“Självvald inläggning”) and the Underlying Therapy Concepts

Patients with repetitive self-harming behaviour are a challenge to psychiatric in-patient treatment as they tend to deteriorate in hospital. Stepwise therapy that increases self-control and self-understanding has shown

positive effects, and the aim of the project is to investigate the underlying therapy concepts in order to co-ordinate better overall therapy for a patient group that consumes many resources, often without positive effect.

PROJECT MEMBERS

Petra Gelhaus, Anette Larsson, Sara Karlström (all at Psychiatry Clinic: Motala/Mjölby, Region Östergötland)

FUNDING

Funded by 2017 LFoU-medel “Självvald inläggning”

TIME PERIOD

2019 - 2022

Social Companion Robots for Older Adults

This project investigates the use of social companion robots in care homes for older adults. The research so far includes long-term ethnographic studies of the use of robot pets in in dementia care, as well as participatory workshops with different groups of stakehold-

ers aiming to disentangle the many inter-related factors involved in the introduction of such technologies. In 2022 an international workshop on care robots for older adults was organized (<https://croa-roman.com/>).

PROJECT MEMBERS

Tom Ziemke (PI), Sofia Thunberg (both at Department of Computer & Information Science, LiU), Ericka Johnson (Department of Thematic Studies, LiU)

FUNDING

Partly supported by ELLIIT, the Excellence Center at Linköping-Lund in Information Technology

TIME PERIOD

2019 - 2024

Social Complexity and Fairness in Synthetic Medical Data

This project is a collaboration between WASHS & WASHS researchers and will develop fairness metrics to evaluate the production of synthetic data from a specific medical dataset, with the hypothesis that intersectionality can contribute to better data. Additionally,

we will closely examine existing synthetic medical data to see if there are lessons social science can take from it to inform theoretical work about intersectional power dynamics in society.

PROJECT MEMBERS

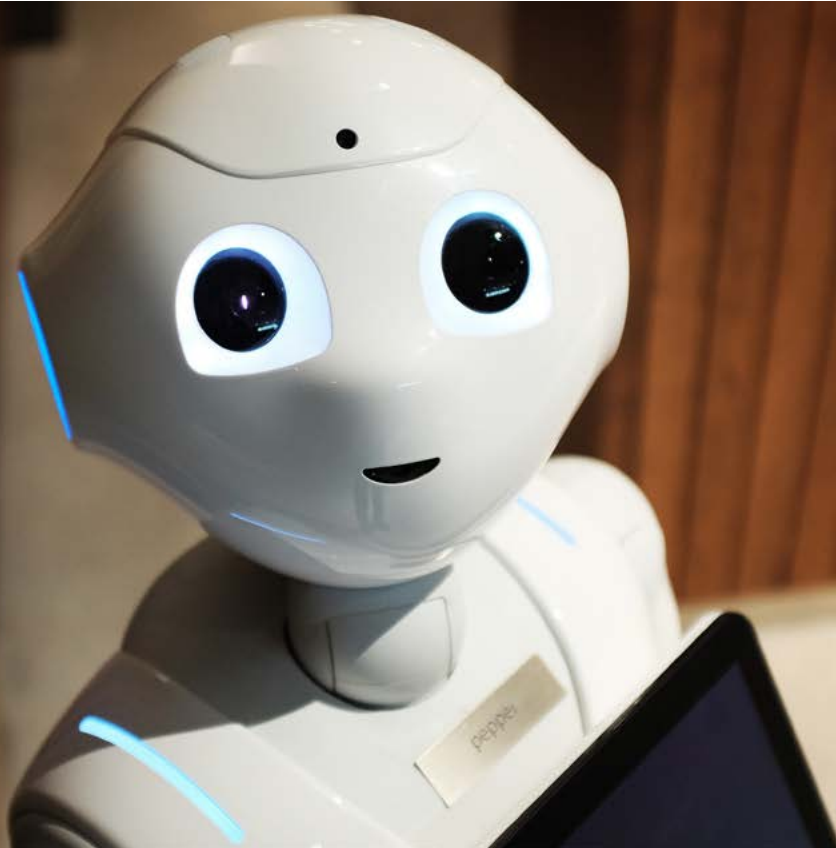
Ericka Johnson (LiU), Gabriel Eilertsen (LiU), Saghi Hajisharif (LiU), Francis Lee (Chalmers)

FUNDING

WASHS-HS

TIME PERIOD

2023 - 2025



The Ethics and Social Consequences of AI & Caring Robots

Robots are starting to enter our daily life. We and our children are going to be expected to interact with robots as they perform different kinds of care for and with us at different life stages. What will that do to how we – and

how the robots – think of care? And how are we going to produce accountability, trust and empathy in the relational intra-actions we have, together?

PROJECT MEMBERS

Ericka Johnson (Co-PI), Katherine Harrison (Co-PI), Maria Arnelid, Dominika Lisy, Isabel Garcia (all at the Department of Thematic Studies, LiU)

FUNDING:

Marianne and Marcus Wallenberg Foundation and WASP-HS

TIME PERIOD

2020–2025

The Many Meanings of Perineal Injuries. Care-Seekers' and Care-Providers' Perspectives on

Second-Degree Perineal Injuries, their Implications, and Potential to Improve Care
The project demonstrates how care-seekers' and care-providers' experiences and attitudes come to matter in care for perineal injuries. It aims to investigate care-seekers' and care-providers' experiences of and attitudes towards

second-degree perineal injuries, and how they shape, and are shaped by, information, treatment, and care encounters. The project also looks at how such attitudes and experiences can be unpacked and problematised to improve care.

PROJECT MEMBERS

Lisa Guntram (PI), Lisa Lindén (Chalmers University of Technology)

FUNDING

Swedish Research Council for Health, Working Life and Welfare

TIME PERIOD

2021–2023

To Operate or Not

The project aims to describe and understand the moral reasoning of vascular surgeons when making clinical decisions.

PROJECT MEMBERS

Kaja Heidenreich (Örebro University), Anders Bremer (Linnaeus University), Marit Karlsson (Department of Biomedical and Clinical Sciences, LiU), Mia Svantesson-Sandberg (Örebro University)

FUNDING

ALF-funding

TIME PERIOD

2020–2022



“What are You Complaining About?” – Patients’ Critique in Care Encounters and Its Potential to Improve Quality of Care

This project studies the meaning of patients’ verbal critique in Swedish care encounters. It investigates patients’ and care professionals’ experiences, and the norms that guide how such critique is expressed and dealt with. Ap-

plying a qualitative and collaborative research design, the project aims to develop medical sociological understandings, while informing ongoing work on complaints and quality improvement in Swedish health care.

PROJECT MEMBERS

Jelmer Brüggemann (PI), Lisa Guntram (both at the Department of Thematic Studies, LiU), Ann-Charlotte Nedlund (Department of Health, Medicine and Caring Sciences, LiU)

FUNDING

Swedish Research Council

TIME PERIOD

2021–2024

Withdrawing or Withholding Treatment as a Result of Reimbursement Decisions – Operationalization of Ethical Principles Utilizing Psychological Traits (WITH-OUT)

In healthcare, withdrawing treatment is considered ethically worse than withholding treatment, despite a lack of ethical analyses to support this. In this project, we are exploring stakeholders’ and citizens’ views on this

distinction, using psychological experiments to identify factors influencing their attitudes towards the distinction, with the final aim to arrive at feasible ethical principles.

PROJECT MEMBERS

Lars Sandman, Liam Strand, Gustav Tinghög, Ann-Charlotte Nedlund (all at the National Centre for Priorities in Health, LiU)

FUNDING

Swedish Research Council for Health, Working Life and Welfare

TIME PERIOD:

2020–2024

What do We Perceive When in Pain?

This theoretical three-part project at the interface between clinical practice and the philosophy of pain explores the three tradi-

tional areas of pain medicine: acute, chronic, and cancer-related pain.

PROJECT MEMBER

Emmanuel Bäckryd (Department of Health, Medicine and Caring Sciences, LiU)

FUNDING

N/A

TIME PERIOD

2018–2024

Work Environment in the Robotized Dementia Care: The Meaning of Social Robots for Caregivers’ Ways of Working and Work Environment.

The project intends to qualitatively and methodically explore the dynamics between the ways in which caregivers use robots in relation to the dementia care patients and the potential implications for the caregivers’ physical and psychosocial work environment. The

study is expected to add to knowledge about how social robots can be used to promote a sustainable working life for the (mainly female) caregivers who work with people with dementia.

PROJECT MEMBERS

Marcus Persson (PI) (Department of Behavioural Sciences and Learning, LiU), David Redmalm (Mälardalen University), Clara Iversen (Uppsala University)

FUNDING:

AFA Insurances (research program: The effects of digitalisation on the work environment in the municipal and regional sector)

TIME PERIOD

2020–2023

International Conversations, Collaborations, and Guest Researchers

During the academic year of 2022/2023, and as part of the work to strengthen medical humanities collaborations internationally, CMHB has met digitally with colleagues in similar research and teaching environments within Denmark, France, Austria, Belgium, Chile, USA, Canada, and Singapore. This is part of the on-going work to strengthen our joint scientific area and explore possibilities for collaborations and the sharing of information about on-going activities within medical humanities and bioethics. We cherish these possibilities to learn about on-going research, teaching, and societal activities in other countries, and to think jointly about how to further strengthen the field of medical humanities and bioethics.

For the second year in a row, CMHB has had the opportunity to welcome guest PhD students from the University of Glasgow through the Turing Mobility Scheme, coordinated by Dr Gavin Miller at University of Glasgow and Prof Ericka Johnson at CMHB. We very much appreciate these visits, the work to enable this scheme, and the mentorship offered by colleagues at the CMHB. In addition to the guest researchers from the UK, we have had the pleasure to welcome guest researchers from other parts of Sweden and Latvia.

Finally, CMHB and the Institute for Medical Humanities (IMH) at Durham University has a formally established collaboration through a Memorandum of Understanding, and CMHB is one of the international partners in the IMH's new *Discovery Research Platform for Medical Humanities*, funded by a £9m award

from the Wellcome Trust. The *Discovery Research Platform for Medical Humanities* will bring the stories and perspectives of people with lived experience of complex health conditions to the forefront of health research. A big congratulations to the colleagues at IMH and the field of medical humanities!



Upcoming Events during 2023/2024

30TH AUGUST - 1 ST SEPTEMBER 2023

Future Interdisciplinarity: Workshop in Vadstena

This workshop, the third of three funded by *Riksbankens Jubileumsfond*, seeks to bring together researchers with a shared interest in the medical humanities, clinical medicine and/or biomedical research. The aim of the workshop is to explore the epistemological underpinnings of interdisciplinary health research within medical humanities and across medical humanities and clinical medicine and/or biomedical research, addressing challenges and new directions that such interdisciplinary work faces.

We welcome international scholars with a shared interest in the medical humanities, clinical medicine and/or biomedical research.



NOVEMBER 2023

CMHBs Third Scientific Salon on the topic of Women's Health

Women's health continues to be a salient topic in politics as well as research. In the beginning of 2023, the Swedish government announced that 1,6 million SEK will be invested in making maternity and delivery care in the countryside more accessible. An overview of research needs with respect to women's health, including many different disciplines and perspec-

tives, is also recently initiated by Forte – Swedish Research Council for Health, Working Life and Welfare. In October, we will engage in these discussions at our third scientific salon.

Central to CMHB's scientific salons are in-depth dialogues between actors from different fields. Thorough short talks and round-table discussion they

bring different perspectives together through creative, reflexive and critical discussion on a shared topic of interest.

More information will soon be available at <https://liu.se/en/research/centre-for-medical-humanities-and-bioethics/latest-news>.

SEPTEMBER 2024

Summer School

What does interdisciplinarity in medical humanities mean? What are the epistemological underpinnings of different multidisciplinary, transdisciplinary or interdisciplinary ways of engaging in medical humanities research? What are the challenges and possibilities of interdisciplinary research at the intersection be-

tween the humanities, the social sciences, clinical research, and biomedicine?

These are some of the questions that will be addressed in the Summer School *Interdisciplinarity: In Medical Humanities and in Research at the Intersection of the Humanities, the Social Sciences, Clinical Practice, and Biomed-*

icine (3 ECTS), that will take place in September 2024. The Summer School is open for PhD students as well as Early Career Researchers. More information will be available at the CMHB website in Autumn 2023.

Publications 2022/2023

Peer-reviewed Articles

- Björkman, M.** (2022) "The cost of normalization: the thalidomide affected and the welfare state", *Scandinavian Journal of History*, <https://doi.org/10.1080/03468755.2022.2147215>
- Byrne, E.A.** (2022) Affective scaffolding and chronic illness, *Philosophical Psychology*, <https://doi.org/10.1080/09515089.2022.2147422>
- Ekeblad, A., Dahlman, M., Pio, M., **Malmquist, A.** & Falkenström, F. (2022) "What shall we focus on?" – A thematic analysis of what characterizes cognitive-behavior therapy sessions with high or low quality of working alliance. *Psychotherapy research*, 32(8), 1103–1015. <https://www.tandfonline.com/doi/full/10.1080/10503307.2022.2074806>
- Ekström, A., Majlesi, A. R., & **Hydén, L. C.** (2022) Assisted eating as a communicative activity: A framework of joint attention and co-ordinated embodied actions. *Journal of Interactional Research in Communication Disorders*, 14, 79–105. <https://doi.org/10.1558/jired.21255>
- Gleisner, J.** (2023) Between Standards and Voluntariness: Midwives' Alignment Work in Antenatal Care. *Science & Technology Studies*. Online first <https://doi.org/10.23987/sts.112830>
- Gunnarson, M., **Zeiler, K.** (2022) Ethico-political aspects of clinical judgment in opportunistic screening for cognitive impairment: Arendtian and Aristotelian perspectives. *Medicine, Health Care and Philosophy* (25): 495–507
- Gustavsson, E.** & Lindblom, L. (2023) Justification of principles for health care priority setting: the relevance and roles of empirical studies of public values. *Journal of Medical Ethics*. <https://doi.org/10.1136/jme-2022-108702>. Epub ahead of print. PMID: 36813548
- Gustavsson E,** Björk J. (2022) The Ethical Relevance of "Alternatives" in Health Care Priority Setting – The Case of Preexposure Prophylaxis (PrEP) of HIV. *The Yale Journal of Biology and Medicine*. Sep 30;95(3):359–365
- Grundström, H., **Malmquist, A.**, Karlsson, A. & Nieminen, K. (2023) Previous trauma exposure and its associations to fear of childbirth and quality of life among pregnant lesbian, bisexual, transgender and queer people and their partners. *LGBTQ+ Family*, 19(2), 526–231. <https://doi.org/10.1080/0167482X.2022.2089555>
- Hallström, S., Grundström, H., **Malmquist, A.**, Eklind, M. & Nieminen, K. (2022) Fear of childbirth and mental health among lesbian, bisexual, transgender and queer people: A cross-sectional study. *Journal of Psychosomatic Obstetrics & Gynecology*, <https://doi.org/10.1080/0167482X.2022.2089555>
- Ingebrand, E., Samuelsson, C., & **Hydén, L. C.** (2023) Supporting people living with dementia in novel joint activities: Managing tablet computers. *Journal of Aging Studies*, 65, Article 101116. <https://doi.org/10.1016/j.jaging.2023.101116>
- Kapeller, A.**, Loosman, I. (2023) Empowerment through health self-testing apps? Revisiting empowerment as a process. *Medicine, Healthcare and Philosophy*. Online first. <https://doi.org/10.1007/s11019-022-10132-w>
- Malmquist, A.**, Bredenberg, C., Melin, J., Wurm, M., Tasker, F., & Gato, J. (2023) Queers in quarantine: Young Swedish LGBTQ people's experiences during the COVID-19 pandemic. *Scandinavian Journal of Psychology*, 64(2), 150–159, <https://doi.org/10.1111/sjop.12871>
- Majlesi, A. R., Ekström, A., & **Hydén, L. C.** (2022) Transferring from wheelchair to bed: (Re)subjectifying and partner-positioning a person with late-stage dementia in the care task. *Qualitative Social Work*. <https://doi.org/10.1177/14733250221124216>
- Morberg Jämterud, S.** & Sandgren, A. (2022) Health care professionals' perceptions of factors influencing the process of identifying patients for serious illness conversations: A qualitative study. *Palliative Medicine*, Vol. 36, s.1072–1079
- Mulinari, S. and **Bredström, A.** (2022) "Black race", "Schwarze Hautfarbe", "Origine africaine", or "Etnia nera"? The absent presence of race in European pharmaceutical regulation. *BioSocieties*, <https://doi.org/10.1057/s41292-022-00291-7>
- Myrberg, K., **Hydén, L. C.**, & Samuelsson, C. (2022) Instances of trouble in aphasia and dementia: an analysis of trouble domain and interactional consequences. *Aphasiology*, 36, 1333–1350. <https://doi.org/doi.org/10.1080/02687038.2021.1959515>
- Persson, M.** (2023) Emotion and management. How frontline care workers feel about using robot animals in elderly care, *The Sociological Review Magazine*, June issue on Artificial Intelligence. <https://thesociologicalreview.org/magazine/june-2023/artificial-intelligence/emotion-and-management/>
- Persson, M.**, Ferm L., Redmalm, D. & Iversen C. (2023) "Working with robotic animals in dementia care: The significance of caregivers' competences", *Nordic Journal of Working Life Studies*, no 3. <https://doi.org/10.18291/njwls.136521>
- Rahman, A., **Hydén, L. C.**, & Kelfve, S. (2022) Long-term care use among people living with dementia: a retrospective register-based study from Sweden. *BMC Geriatrics*, 22:998. <https://doi.org/10.1186/s12877-022-03713-0>
- Rydén Grammer, A.** (2022) Feeling rules for professionals: medical students constructing emotional labour in fiction talk. *Studies in Continuing Education*
- Rydén Grammer, A.** (2022) Moving books and sensitive readers: Affective stances about fiction, film and poetry in medical education. *Communication and Medicine*, 18(1), 78–90

Rydén Gramner, A. (2023) Fiction talk as a reflective practice: Medical students discussing possible learning outcomes from fiction seminars. *Learning, Culture and Social Interaction*, 40, 100713

Strand, L., **Sandman, L.**, Tinghög, G., Nedlund, A.-C. (2022) Withdrawing or withholding treatments in health care rationing: an interview study on ethical views and implications. *BMC Medical Ethics*. 23(63). <https://doi.org/10.1186/s12910-022-00805-9>

Vázquez, I., Gato, J., Coimbra, S., Barrientos, J., Tasker, F., Miscioscia, M., Cerqueira-Santos, E., **Malmquist, A.**, Seabra, D., Leal, D., Houghton, M., Poli, M., Gubello, A., Miranda Ramos, M., Guzmán, M., Urzúa, A., Ulloa, F., & Wurm, M. (2023) Psychological adjustment profiles of LGBTQ+ young adults residing with their parents during the COVID-19 pandemic: An international study. *International Journal of Environmental Research and Public Health*, <https://doi.org/10.3390/ijerph20043188>

Ågren, A., Krevers, B., Cedersund, E., **Nedlund, A.-C.** (2023). Policy Narratives on Palliative Care in Sweden 1974–2018. *Health Care Anal* 31, 99–113 (2023). <https://doi.org/10.1007/s10728-022-00449-1>

Books and Book Chapters

Bredström, A. (2024, in press) Intersectionality and health inequality: methodological reflections. In David, K and Lutz, H. *Routledge Handbook of Intersectionality Studies*. Routledge

Brüggemann, J., Guntram, L., Nedlund, AC. (2023) The “Difficult Patient” – Dominant Logics and Misfits in Medicine. In: Liamputtong, P. (eds) *Handbook of Social Sciences and Global Public Health*. Springer, Cham. https://doi.org/10.1007/978-3-030-96778-9_138-1

Guntram, L. (2022) Reproduction and Beyond: Imaginaries of Uterus Transplantation in the Light of Embodied Histories of Living Life Without a Uterus. In: Shaw RM (ed.) *Reproductive Citizenship: Technologies, Rights and Relationships*. Health, Technology and Society. Singapore: Springer Nature. https://doi.org/10.1007/978-981-16-9451-6_6

Hydén, L. C. (2022) Gerontopsychology: Dementia and identity. In M. Bamberg, C. Demuth, M. Watzlawik (Eds.), *Cambridge Handbook of Identity* (pp. 487-507). Cambridge University Press

Hydén, L. C. (2022) Personhood in Living with Dementia. In J. N. Lester & M. O'Reilly (Eds.), *The Palgrave Encyclopedia of Critical Perspectives on Mental Health* (pp. 1–10). Springer International Publishing. https://doi.org/10.1007/978-3-030-12852-4_6-1

Gustavsson, E. & Kåreklint, L. (2022) Prioriteringar inför händelse av kris och krig. In Sandman, L. (ed) *Prioriteringscentrum – 20 år i rättvisans tjänst*. Linköping: Linköping University Electronic Press. <https://doi.org/10.3384/9789179294144>

Johnson, E. (2022) Screening för prostata cancer. In Wickström, A., Morberg Jämterud, S., Zeiler, K (eds.). *Screeningens mångsidighet. Dess möjligheter och utmaningar*. Lund: Nordic Academic Press. pp. 49–66

Malmquist, A. & Klittmark, S. (2022) Heteronormative obstacles in regular antenatal education, and the benefits of LGBTQ certified options: Experiences among prospective LGBTQ parents in Sweden. In: M. Nolan & S. Gore (Eds.), *Contemporary Issues in Perinatal Education*, pp. 240–247. Routledge. <https://doi.org/10.4324/9781003223771>

Morberg Jämterud, S. (2022) Sårbarhetens ansikte: Anlagsbärarscreening inför graviditet. In Wickström, A., Morberg Jämterud, S., Zeiler, K (eds.). *Screeningens mångsidighet. Dess möjligheter och utmaningar*. Lund: Nordic Academic Press, pp. 87–103

Wickström, A. (2022) Glappet i berättelsen om ungas psykiska hälsa: Symtom som screeningverktyg. In Wickström, A., Morberg Jämterud, S., Zeiler, K (eds.). *Screeningens mångsidighet. Dess möjligheter och utmaningar*. Lund: Nordic Academic Press, pp. 27–48

Wickström, A., Morberg Jämterud, S., Zeiler, K. (2022). Inledning. In Wickström, A., Morberg Jämterud, S., Zeiler, K (eds.). *Screeningens mångsidighet. Dess möjligheter och utmaningar*. Lund: Nordic Academic Press, pp. 9–26

Zeiler, K. (2022) Embodiment: Contributions from Feminist Science and Technology Studies and Feminist Phenomenology. In: The Routledge Handbook of Feminist Bioethics (eds. Wendy A. Rogers; Jackie Leach Scully; Stacy M. Carter; Vikki A. Entwistle; Catherine Mills). ISBN 9780367860998

Zeiler, K. (2022) Testning och screening för COVID-19. Kunskapsmässig och ontologisk osäkerhet under pandemin. In Wickström, A., Morberg Jämterud, S., Zeiler, K (eds.). *Screeningens mångsidighet. Dess möjligheter och utmaningar*. Lund: Nordic Academic Press, pp. 105–124

Popular science/ other publications

Gustavsson, E. (2022) ”Vi måste prata om världens prioriteringar i kristid” Forskning och framsteg, online 2022-02-24

Lundberg, T., **Malmquist, A.** & Wurm, M. (2022) Experiences and management of minority stress and microaggressions among young LGBTQ people in Sweden. In: *“I am not alone, there are others like me”: Young LGBTQI people’s living conditions* (pp. 315–343). Available at <https://www.mucl.se/publikationer/jag-ar-inte-ensam-det-finns-andra-som-jag?fbclid=IwAR0wHPPr7LesayuFje8wsa-CyZGsk73ZaC4v8SNMTZHexBuMn-z4Fz1aDmow9I>

Commentaries, book reviews and conference proceedings

Bond, K., **Sandman, L., Gustavsson, E.** (2022) Oral: “Taking a chance on health: the lottery principle, health-care resource allocation, and orphan drugs”. 13th International Society for Priorities in Health Conference: Fair Priorities in Unjust Circumstances – Emergencies, Universal Health Coverage and High-Cost Interventions, Bergen, Norway. Abstract published in *BMJ Global Health* 7:A21

Gustavsson, E., Kåreklint, L. (2022) Poster: “The resilience of health care systems and priority setting ethics”: 13th International Society for Priorities in Health Conference: Fair Priorities in Unjust Circumstances – Emergencies, Universal Health Coverage and High-Cost Interventions, Bergen, Norway. Abstract published in *BMJ Global Health* 7:A13

Thunberg, S., **M. Arnelid & T. Ziemke.** (2022) Older Adults’ Perception of the Furhat Robot. In: *HAI ’22: Proceedings of the 10th International Conference on Human-Agent Interaction* (pp. 4–12). <https://doi.org/10.1145/3527188.3561924>

Winkle, K., D. McMillan, **M. Arnelid, M. Balaam, K. Harrison, E. Johnson, I. Leite.** (2023) Feminist Human-robot Interaction: Disentangling Power, Principles and Practice for Better, More Ethical HRI. *HRI’23. ACM ISBN 978-1-4503-9964-7/23/03*



Follow us

WEBSITE:

liu.se/en/research/centre-for-medical-humanities-and-bioethics

TWITTER:

@Cmhb_LiU